

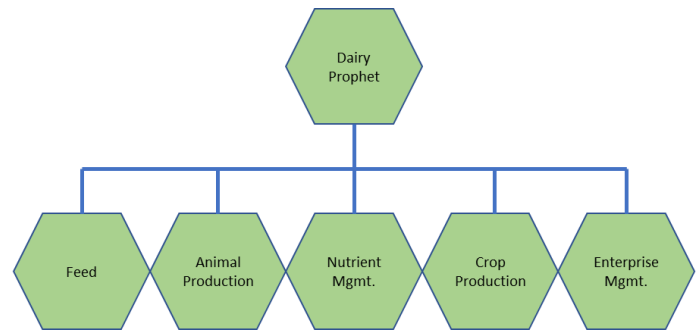


Dairy Prophet

Dairy Prophet™ is an Internet based Digital Dairy™ information management system that facilitates the hosting and management of dairy operations information used to improve operational efficiency and feeding accuracy. In collaboration with the AgModels Foundation, the Dairy Prophet system provides a platform for data analysis and reporting required for the execution of quality management plans and continual improvement in herd management.

With the Dairy Prophet™ system, farms can quickly build and generate feed sheets, calculate feed refusal rates, estimate feeding costs, track feed utilization rates, project feed run-out dates, archive data for future analysis and benchmarking against peers.

With regularly updated data, Dairy Prophet™ can produce printed sheets and screen displays of herd feeding plans and record feed plan execution. Further, Dairy Prophet



- Provides step-by-step guidance for the feed wagon loading and unloading process
- Automatically adjusts feeding plans based on changes to pen counts and silage dry matter weight variations

A select group of farms have been using the Dairy Prophet™ system daily for over 10 years. Our customers report reductions in feed costs, increases in milk production, improvements in waste and crop management, and additional benefits from automating manual record keeping requirements and regulatory reporting.

Dairy Prophet™ is designed as a pure browser based Internet application and runs on all Internet accessible devices: PCs, laptops, tablets and smart phones. This accommodates data capture from anywhere on the farm where the Internet can be accessed. No additional equipment is required to get started.

Getting Started



Step 1. Contact AgModels to schedule a visit with an AgModels consultant to discuss your farm operations and learn exactly how Dairy Prophet can improve the quality and performance of your business

Step 2. Purchase an Annual Use License. That, along with some basic training for you and your staff, is all that is needed to get started.

Step 3. Working with an AgModels consultant, set up pen and feed plans (Custom Installations - Starting in 4Q17)

Step 4. Start using the system